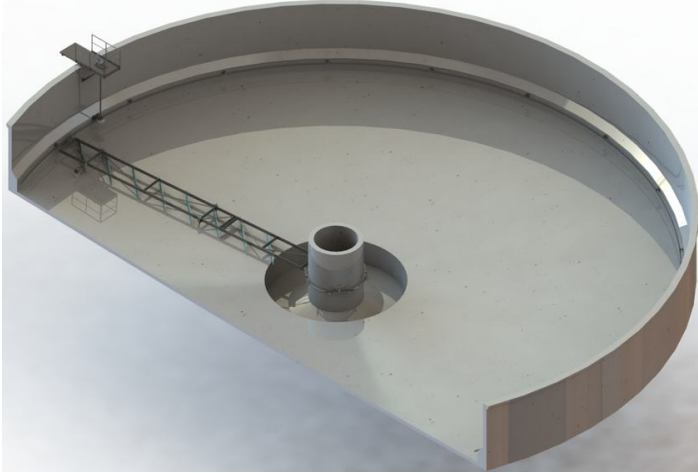


CIRCLESRAPE ECBS

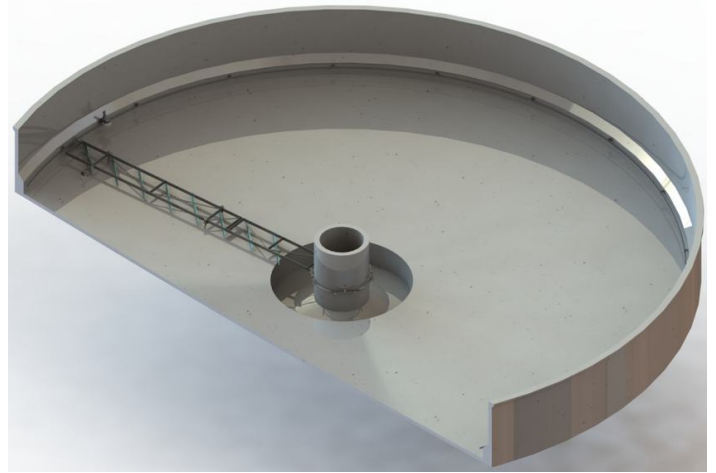
CIRCULAR BOTTOM SCRAPER

PRODUCER

NEOWATER technologies



Circular suction scraper ECBS with dry placed drive unit



Circular suction scraper ECBS with submerged drive unit

MAIN CHARACTERISTICS AND APPLICATIONS:

- one construction with only few moving parts
- low maintenance costs
- designed for submerged and dry placed drive unit
- resistant and robust construction
- compact design: easy to cover with no bridge or wall attachments
- flexible design: easily adaptable to existing reservoirs
- suitable for treating the entire bottom area

OPERATING PRINCIPLE

The ECBS Circular Bottom Scraper is designed for continuous removal of sediment in circular mainly primary sedimentation reservoirs. The scraping frame (arm) is completely placed under the water. Optionally available is an additional frame for caring the scum scraper. For the collection of scum an optional bunker can be ordered. The driving unit can be placed on the platform at the edge of the reservoir wall above the water level or submerged on the wall close to the tank bottom.

The special designed drive is moving the driving ring, placed on the peripheral wall inside the tank on the brackets. The driving ring moves the scraping arm around the reservoir. The design allows continuous movement of sediments with adjustable rotation speed towards the central sludge pit to guarantee best results of scraping with low energy consumption and high sludge content.

The scraping arm features strong, durable wheels, it ensures long operational periods without maintenance. Additionally, the scraper's design allows for easy adaptation to existing circular settling tanks.